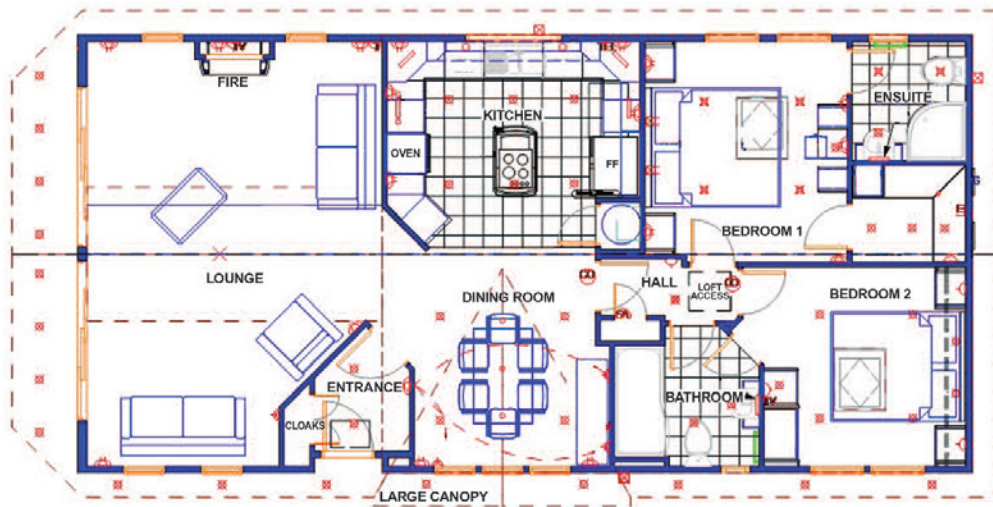




RUDDING

HOLIDAY PARK

Portrush



Name: Portrush on Repton Green

Model: Lissett Savannah

Size: 45' x 22'

Year: 2009

Bedrooms: Two

Facilities: Fully furnished, large fitted kitchen and open plan dining area. Large lounge with bi-folding patio doors giving access to the large decked verandah with wooden furniture and hot tub. Double glazed windows, underfloor heating throughout, master bedroom with ensuite shower room and walk in wardrobe, further double bedroom with access to house bathroom.

To arrange a viewing
call Toni Fernandes,
Holiday Park Manager
on 07900 901434

£215,000

Including Site fees to 31 January 2016