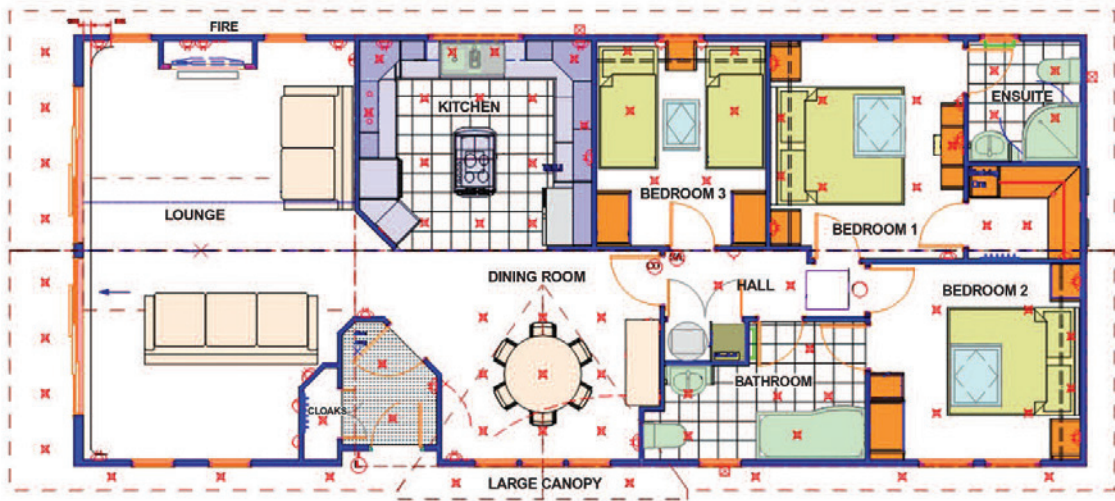




RUDDING

HOLIDAY PARK

Huntingdale



Name: Huntingdale on Repton Green

Model: Lissett Savannah

Size: 51'6" x 22'

Year: 2011

Bedrooms: Three

Facilities: Fully furnished, large fitted kitchen and open plan dining area. Large lounge with bi-folding patio doors giving access to the large decked verandah with wooden furniture and hot tub. Double glazed windows, underfloor heating throughout, master bedroom with ensuite shower room and walk in wardrobe, two further bedrooms (one double, one twin) with fitted wardrobes, house bathroom with shower over bath.

To arrange a viewing
call Toni Fernandes,
Holiday Park Manager
on 07900 901434

£265,000

Including Site fees to 31 January 2016